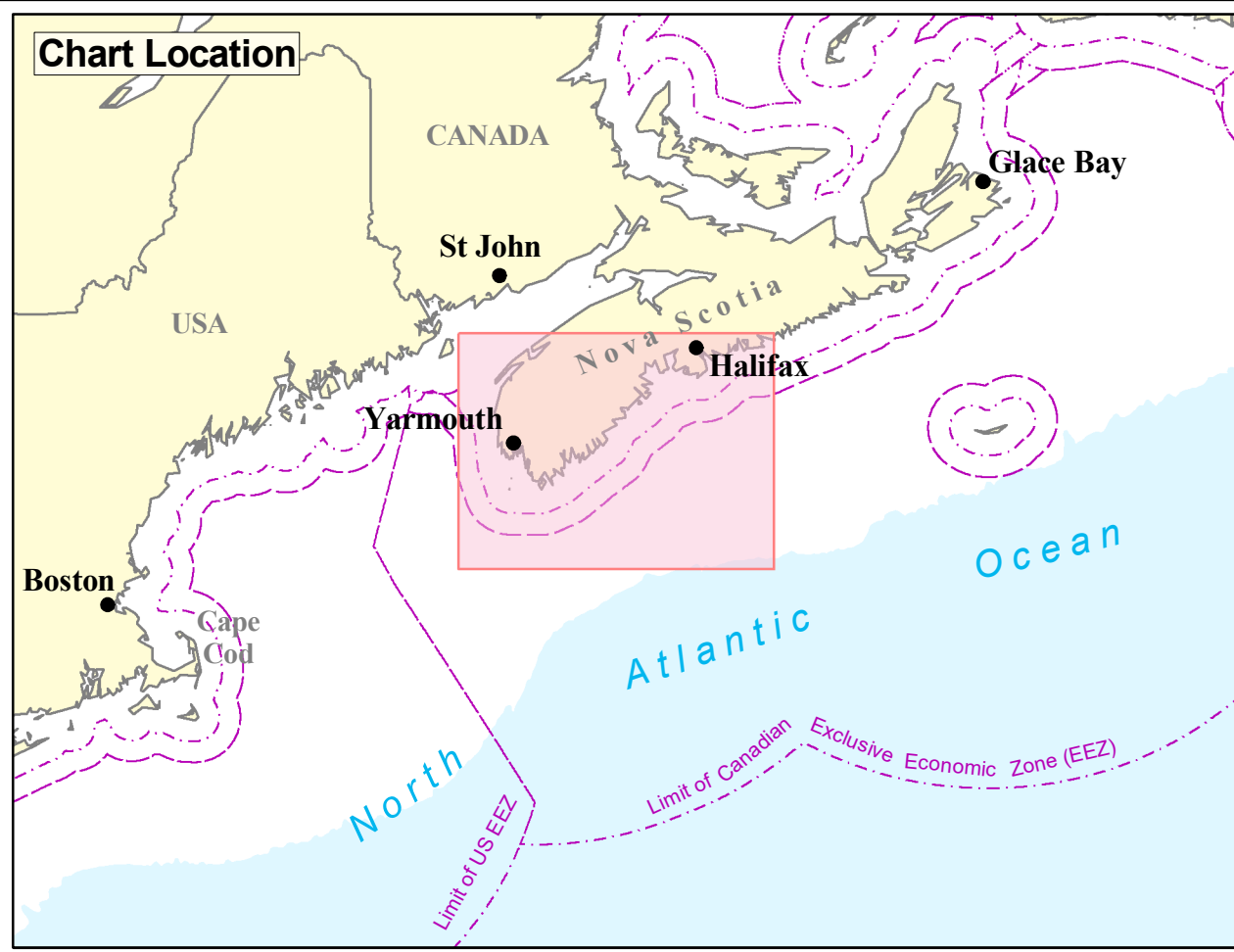


North American Submarine Cable Association
www.n-a-s-c-a.org



LEGEND

- NASCA Member Cables In Service
- - - NASCA Member Cables Out of Service
- · - · - Maritime Boundaries
- Bathymetry - Depth in Metres

General Note
 These cables are plotted based on the best available data from cable owners and members of the North American Submarine Cable Association (NASCA) at the time of production.
 Please be aware that there may be other cables in the area that are not depicted on this chart.

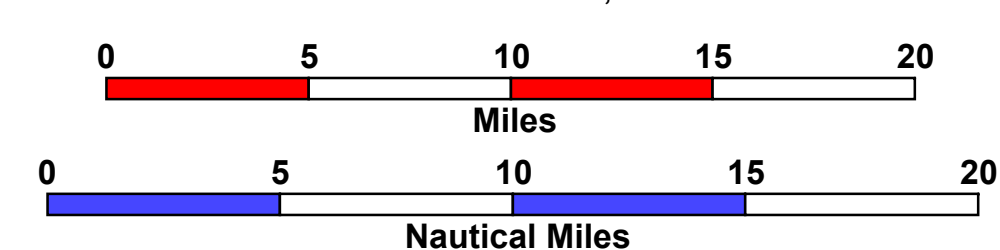
CABLE & CONTACT INFORMATION

Cable System	Status	Owner	Emergency Contact No.
HIBERNIA Segment A	<i>In Service</i>	EXA Infrastructure	1-800-409-4471
HIBERNIA Segment D	<i>In Service</i>	EXA Infrastructure	1-800-409-4471
HIBERNIA Segment E	<i>In Service</i>	EXA Infrastructure	1-800-409-4471
HIBERNIA EXPRESS Seg 1	<i>In Service</i>	EXA Infrastructure	1-800-409-4471

Emergency Contact Information
 In the event you one become entangled in one of the submarine cables shown on this chart please contact the relevant owner listed on this chart 24 hours a day, seven days a week.
EmergencyContact@nasca.org

For General Information
 For non-emergency information regarding any of the cable systems shown on this chart, or for marine planning purposes, please contact:
cableinfo@N-A-S-C-A.org

NATURAL SCALE 1 : 300,000 at 48°00' N



SPHEROID & DATUM : WGS84
 PROJECTION : MERCATOR

Notes:
 This chart is intended for general reference only and **NOT FOR NAVIGATION PURPOSES.**
 Please be aware that other cables may exist in addition to those shown on this chart.

SOUNDINGS IN FATHOMS
 AT MEAN LOW WATER


CHART HISTORY

Produced by Charting Services
 Global Marine Systems Limited, Chelmsford,
 United Kingdom
 Copyright © 2021 Global Marine Systems Limited

EDITION No. 4 November 2021

CHART BACKGROUND:
Derived from GMSL Database

For more information see:
www.globalmarinesystems.com



NASCA Cable Awareness Chart
Eastern Canada Region
NOVA SCOTIA SOUTH

Global Marine Group
 Ocean House
 1 Woodwell Way
 Chelmsford
 Essex
 CM2 2EP
 Tel: +44 (0) 1245 732000
 www.globalmarine.group