

ABSECON INLET
Scale 1:20,000
SOUNDINGS IN FEET
AT MEAN LOWER LOW WATER

**LITTLE EGG INLET TO
HEREFORD INLET**
Mercator Projection
Scale 1:50,000 at Lat. 39° 15'
North American Datum of 1983
(World Geodetic System 1984)
SOUNDINGS IN FEET
AT MEAN LOWER LOW WATER

UNITED STATES - EAST COAST
NEW JERSEY

Additional information can be obtained at nauticalcharts.noaa.gov.

For Symbols and Abbreviations see Chart No. 1.

COASTWISE: International Regulations for Preventing Collisions at Sea, 1972. (International Rules see above.)

AUTHORITIES
Hydrographic and Surveying for the National Ocean Service, Coast Survey, with additional data from the Corps of Engineers, Geological Survey, State of New Jersey, Division of Transportation, and U.S. Coast Guard.

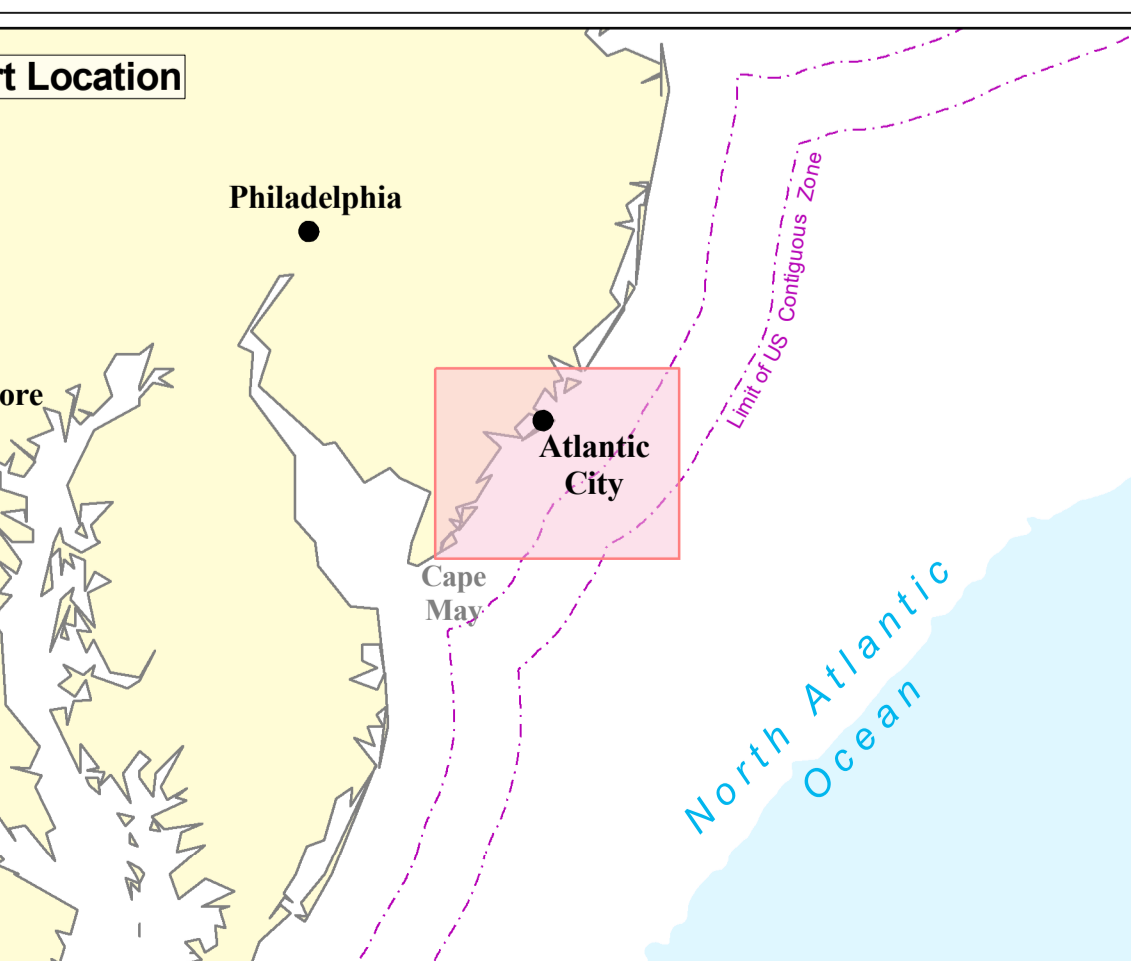
SUPPLEMENTAL INFORMATION
Consult U.S. Coast Pilot 3 for important supplement information.

HEIGHTS
Heights in feet above Mean High Water.

DATE	PLACE	SOUNDING INFORMATION			
		High	Mean	Low	Very Low
1983	Little Egg Inlet	2.0	1.0	0.0	0.0
1983	Hereford Inlet	2.0	1.0	0.0	0.0
1983	Absecon Inlet	2.0	1.0	0.0	0.0
1983	Hereford Inlet	2.0	1.0	0.0	0.0

HARBORS AND TIDAL STAGES
Harbors, tidal basins and other major basins may cause considerable changes in water depths. Users of nautical charts should consult the appropriate tide tables for the area.

Chart No. 12318



LEGEND

- NASCA Member Cables In Service
- NASCA Member Cables Out of Service
- Maritime Boundaries

General Note
These cables are plotted based on the best available data from cableowners and members of the North American Submarine Cable Association (NASCA) at the time of production.
Please be aware that there may be other cables in the area that are not depicted on this chart.

CABLE & CONTACT INFORMATION

Cable System	Status	Owner	Emergency Contact No.
GlobeNet Segment 1	In Service	Globenet	1-609-377-9494 or 1-609-294-8661
GlobeNet Segment 5	In Service	Globenet	1-609-377-9494 or 1-609-294-8661
TAT 4	OOS	AT&T	1-866-466-2288, Prompt 5
TAT 14 Segment G	OOS	AT&T	1-866-466-2288, Prompt 5
TAT 14 Segment L	OOS	AT&T	1-866-466-2288, Prompt 5

Emergency Contact Information
In the event you one become entangled in one of the submarine cables shown on this chart please contact the relevant owner listed on this chart 24 hours a day, seven days a week.

For General Information
For non-emergency information regarding any of the cable systems shown on this chart, or for marine planning purposes, please contact: cableinfo@N-A-S-C-A.org

NATURAL SCALE 1 : 80,000 at 39°15' N

SPHEROID & DATUM : WGS84
PROJECTION : MERCATOR

Notes:
This chart is intended for general reference only and **NOT FOR NAVIGATION PURPOSES.**
Please be aware that other cables may exist in addition to those shown on this chart.

SOUNDINGS IN FEET
AT MEAN LOWER WATER

CHART HISTORY

Produced by Charting Services
Global Marine Systems Limited, Chelmsford,
United Kingdom
Copyright © 2021 Global Marine Systems Limited

EDITION No. 4 November 2021

CHART BACKGROUND:
NOAA Chart 12318. 45th Edition, April 2010

For more information see:
www.nauticalcharts.noaa.gov

Global Marine Group
Chart House
1 Windmill Way
Chelmsford
Essex
CM2 0FD
Tel: +44 (0) 1245 702000
www.globalmarinegroup.com

Global Marine
NASCA Cable Awareness Chart

Mid-Atlantic Region

Chart no. 12318

**LITTLE EGG INLET to
HEREFORD INLET**