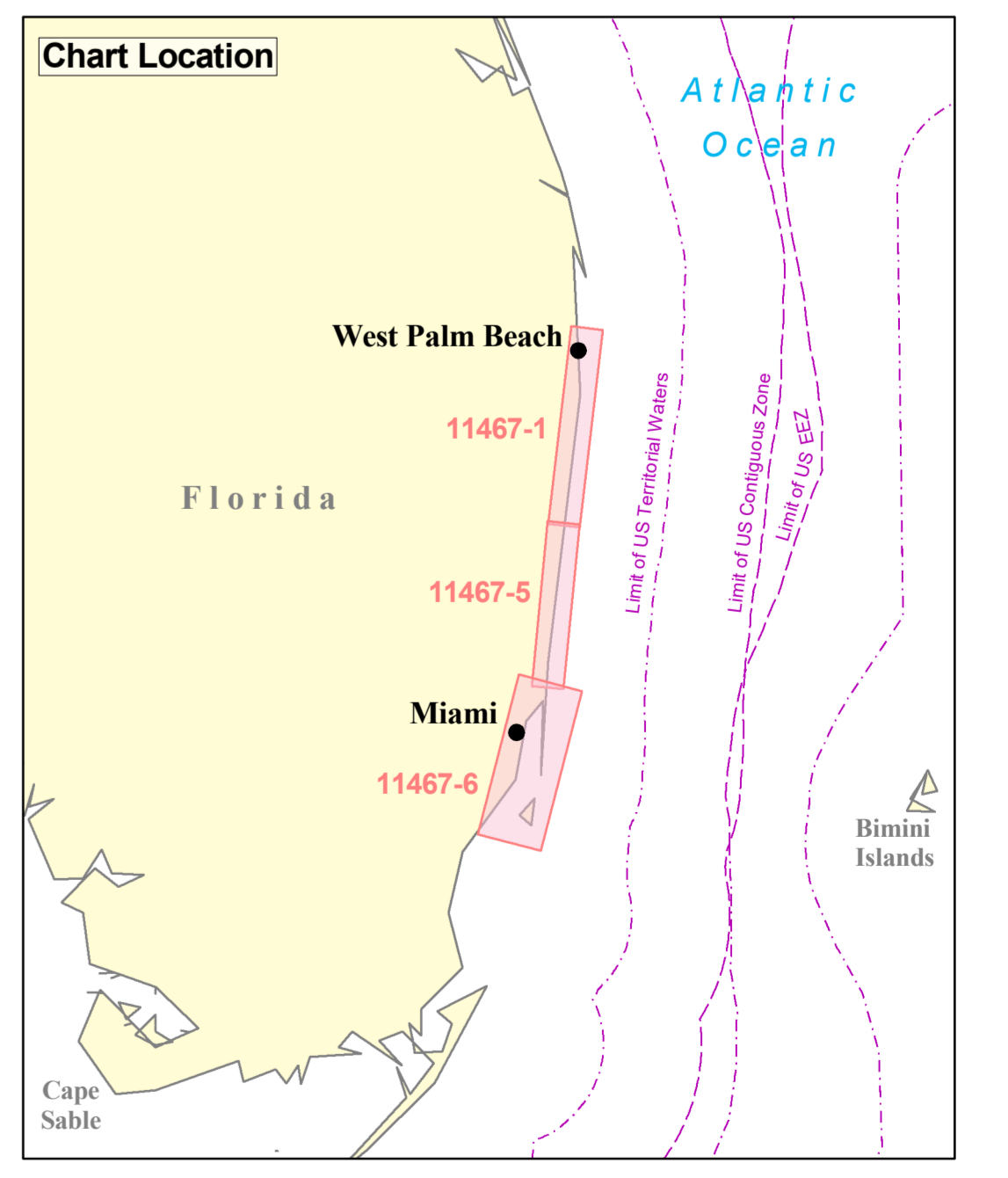
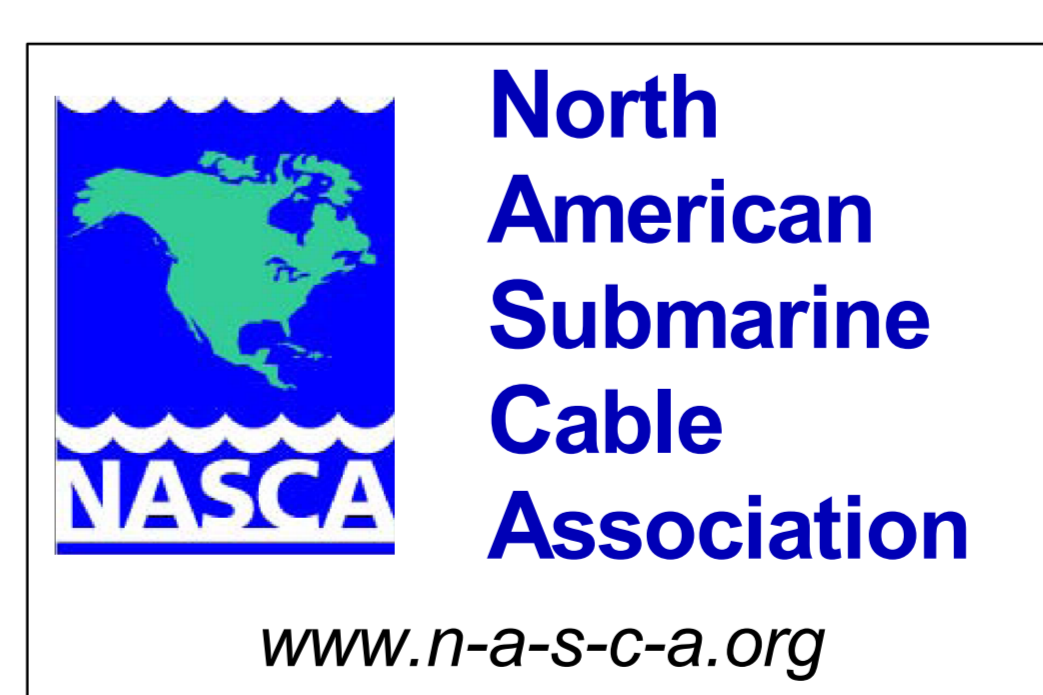


THE NATION'S CHARTMAKER SINCE 1807
UNITED STATES
FLORIDA - EAST COAST



Emergency Contact Information
 In the event you become entangled in one of the submarine cables shown on this chart please contact the relevant owner listed on this chart 24 hours a day, seven days a week.

For General Information
 For non-emergency information regarding any of the cable systems shown on this chart, or for marine planning purposes, please contact: cableinfo@N-A-S-C-A.org

LEGEND

- NASCA Member Cables In Service
- NASCA Member Cables Out of Service
- Maritime Boundaries

General Note
 These cables are plotted based on the best available data from cable owners and members of the North American Submarine Cable Association (NASCA) at the time of production.
 Please be aware that there may be other cables in the area that are not depicted on this chart.

CABLE & CONTACT INFORMATION

Cable System	Status	Owner	Emergency Contact No.
Americas 2 Segment 12	In Service	AT&T	1-866-466-2288, Prompt 5
ARCOS 1 Segment 1	In Service	C&W	786.274.8818
ARCOS 1 Segment 25	In Service	C&W	786.274.8818
CFX-1	In Service	C&W	786.274.8818
Columbus 3 Segment 7	OOS	AT&T	1-866-466-2288, Prompt 5
GlobeNet Segment 1	In Service	Globenet	1-609-377-9494 or 1-609-294-8661
GlobeNet Segment 2.1	In Service	Globenet	1-609-377-9494 or 1-609-294-8661
MAC 1 Segment 1	In Service	Lumen Technologies	1-877-881-9205
MAC 1 Segment 2	In Service	Lumen Technologies	1-877-881-9205
MAYA-1	In Service	AT&T	1-866-466-2288, Prompt 5
MONET Segment S1	In Service	MONET Consortium	1-973-316-2096

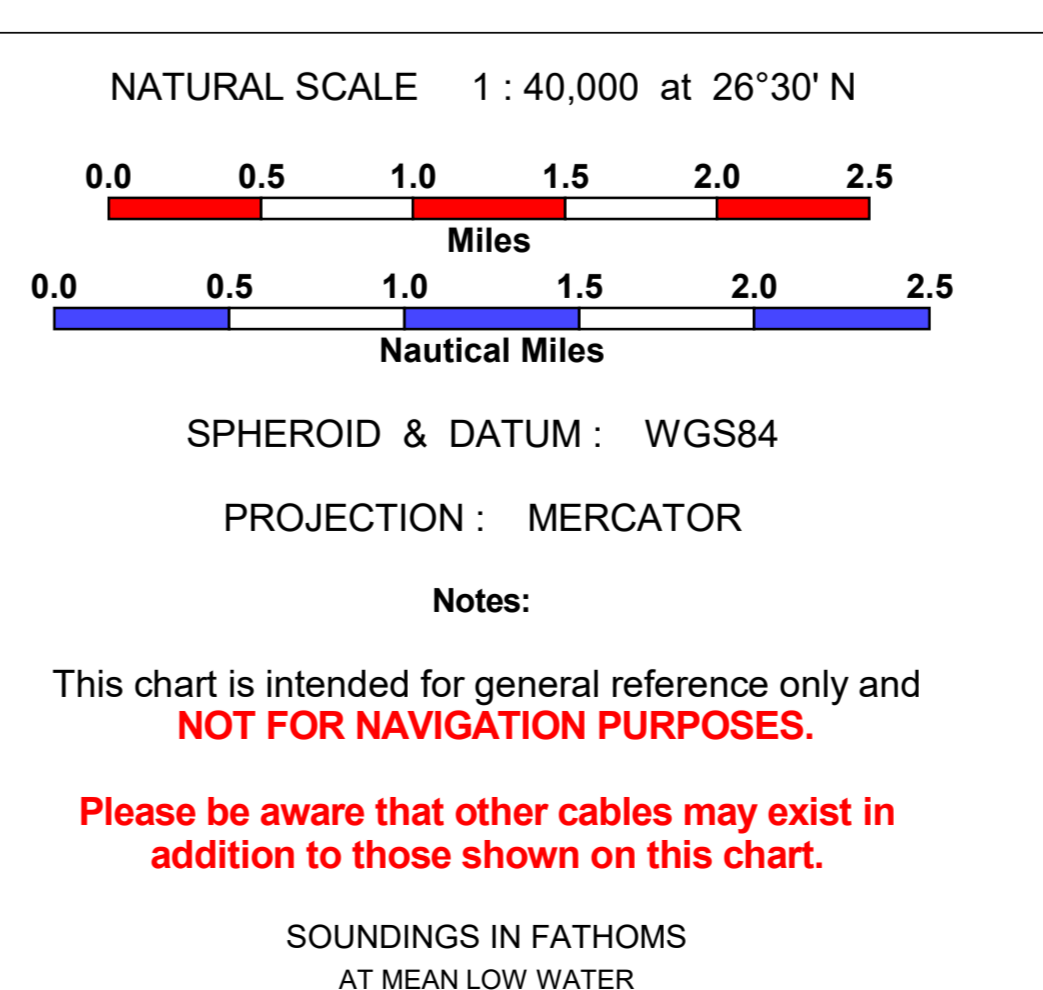


CHART HISTORY

Produced by Charting Services
 Global Marine Systems Limited, Chelmsford, United Kingdom
 Copyright © 2021 Global Marine Systems Limited

EDITION No. 5 November 2021

CHART BACKGROUND:
 NOAA Chart 11467, 45th Edition, December 2019

For more information see: www.nauticalcharts.noaa.gov

NASCA Cable Awareness Chart
Florida Region
Chart no. 11467
WEST PALM BEACH TO MIAMI

Global Marine Group
 Crown House
 100 Brookway
 Essex
 CH4 3PD
 Tel: +44 (0) 1463 702000
 www.globalmarine.group