

North American Submarine Cable Association
NASCA
www.n-a-s-c-a.org

UNITED STATES
 FLORIDA - EAST COAST
STRAITS OF FLORIDA
 FOWEY ROCKS, HILLSBORO INLET TO BIMINI ISLANDS, BAHAMAS

Meridian Projection
 Scale 1:100,000 at Lat. 26°00'
 North American Datum of 1983
 (World Geodetic System 1984)
SOUNDINGS IN FATHOMS
 SOUNDINGS NOT TO BE USED AT MEAN LOW WATER
 AT MEAN LOW WATER
 For Symbols and Abbreviations see Chart No. 1

HEIGHTS
 Heights are above Mean High Water

AUTHORITIES
 Hydrographic and topographic by the National Ocean Service, Coast Survey, with additions and alterations by the Coast and Geodetic Survey, U.S. Coast and Geodetic Survey, and other authorities.

COASTLINE
 Temporary changes or defects in aids to navigation are indicated on this chart. See Notice to Mariners.

ABLE TO NAVIGATE
 Consult U.S. Coast and Geodetic Survey for supplemental information concerning aids to navigation.

NOTES
 Navigation regulations are published in Chapter 2, U.S. Coast and Geodetic Survey, and are available in the Maritime Manual, Information concerning the regulations may be obtained from the U.S. Coast and Geodetic Survey, Office of Hydrography, Washington, D.C.

WARNING
 The charted information may not be reliable in an emergency. For information concerning the reliability of the information, consult the U.S. Coast and Geodetic Survey, Office of Hydrography, Washington, D.C.

TOTAL INFORMATION

NAME	PLACES	HEIGHT	DEPTH	LENGTH	WIDTH
North Rock	110	10	10	10	10
North Bimini	110	10	10	10	10
South Bimini	110	10	10	10	10

PRINT ON DEMAND CHARTS
 NOAA and its partner, Chartwell, offer the most updated charts by NOAA to help you navigate and keep your charts current. Chartwell offers other charting services including electronic charts, chart updates, and chart sales. For more information, visit www.chartwell.com.

POLLUTION REPORTS
 Report all spills of oil and hazardous materials to the National Response Center via 1-800-424-8802 (24 hr), or to the nearest U.S. Coast Guard facility. For more information, visit www.nrc.gov.

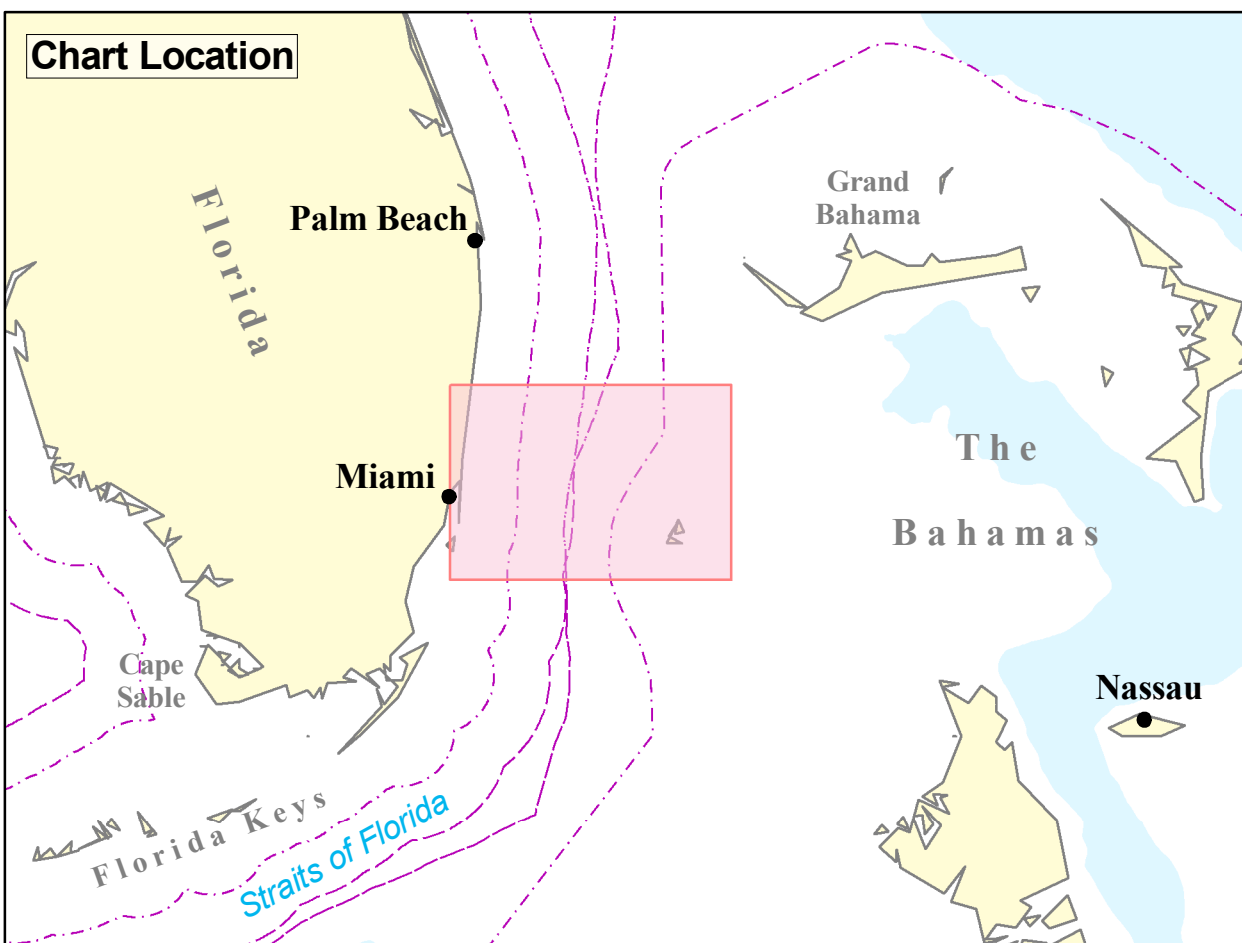
NOTE X
 The charted information may not be reliable in an emergency. For information concerning the reliability of the information, consult the U.S. Coast and Geodetic Survey, Office of Hydrography, Washington, D.C.

CAUTION
 Submarine pipelines and cables are shown on this chart. These pipelines and cables are shown on this chart. For more information, visit www.chartwell.com.

CAUTION
 Submarine pipelines and cables are shown on this chart. These pipelines and cables are shown on this chart. For more information, visit www.chartwell.com.

NOTE
 The charted information may not be reliable in an emergency. For information concerning the reliability of the information, consult the U.S. Coast and Geodetic Survey, Office of Hydrography, Washington, D.C.

NOTE
 The charted information may not be reliable in an emergency. For information concerning the reliability of the information, consult the U.S. Coast and Geodetic Survey, Office of Hydrography, Washington, D.C.



LEGEND

- NASCA Member Cables In Service
- NASCA Member Cables Out of Service
- Maritime Boundaries

General Note
 These cables are plotted based on the best available data from cable owners and members of the North American Submarine Cable Association (NASCA) at the time of production.
 Please be aware that there may be other cables in the area that are not depicted on this chart.

CABLE & CONTACT INFORMATION

Cable System	Status	Owner	Emergency Contact No.
Americas 2 Segment 12	In Service	AT&T	1-866-466-2288, Prompt 5
ARCOS 1 Segment 1	In Service	C&W	786.274.8818
ARCOS 1 Segment 25	In Service	C&W	786.274.8818
CFX-1	In Service	C&W	786.274.8818

Cable System	Status	Owner	Emergency Contact No.
Columbus 2 Segment A	OOS	AT&T	1-866-466-2288, Prompt 5
Columbus 3 Segment 7	OOS	AT&T	1-866-466-2288, Prompt 5
MAC 1 Segment 1	In Service	Lumen Technologies	1-877-881-9205
MAC 1 Segment 2	In Service	Lumen Technologies	1-877-881-9205
MAYA-1	In Service	AT&T	1-866-466-2288, Prompt 5

Emergency Contact Information
 In the event you become entangled in one of the submarine cables shown on this chart please contact the relevant owner listed on this chart 24 hours a day, seven days a week.

For General Information
 For non-emergency information regarding any of the cable systems shown on this chart, or for marine planning purposes, please contact: cableinfo@N-A-S-C-A.org

NATURAL SCALE 1 : 100,000 at 26°00' N

0 1 2 3 4 5
 Miles

0 1 2 3 4 5
 Nautical Miles

SPHEROID & DATUM : WGS84
PROJECTION : MERCATOR

Notes:
 This chart is intended for general reference only and NOT FOR NAVIGATION PURPOSES.
 Please be aware that other cables may exist in addition to those shown on this chart.

SOUNDINGS IN FATHOMS
 AT MEAN LOW WATER

CHART HISTORY

Produced by Charting Systems
 Global Marine Systems Limited, Chelmsford,
 United Kingdom
 Copyright © 2021 Global Marine Systems Limited

EDITION No. 3 November 2021

CHART BACKGROUND:
 NOAA Chart 11469, 10th Edition, February 2018

For more information see:
www.nauticalcharts.noaa.gov

Global Marine Group
 Charting Systems
 Chelmsford
 Essex
 CM2 9PQ
 UK
 Tel: +44 (0) 1432 703300
 www.globalmarine.group

Global Marine

NASCA Cable Awareness Chart

Mid-Atlantic Region

Chart no. 11469

FOWEY ROCKS