

**North American Submarine Cable Association**  
  
[www.n-a-s-c-a.org](http://www.n-a-s-c-a.org)

**POINT ARENA TO TRINIDAD HEAD**

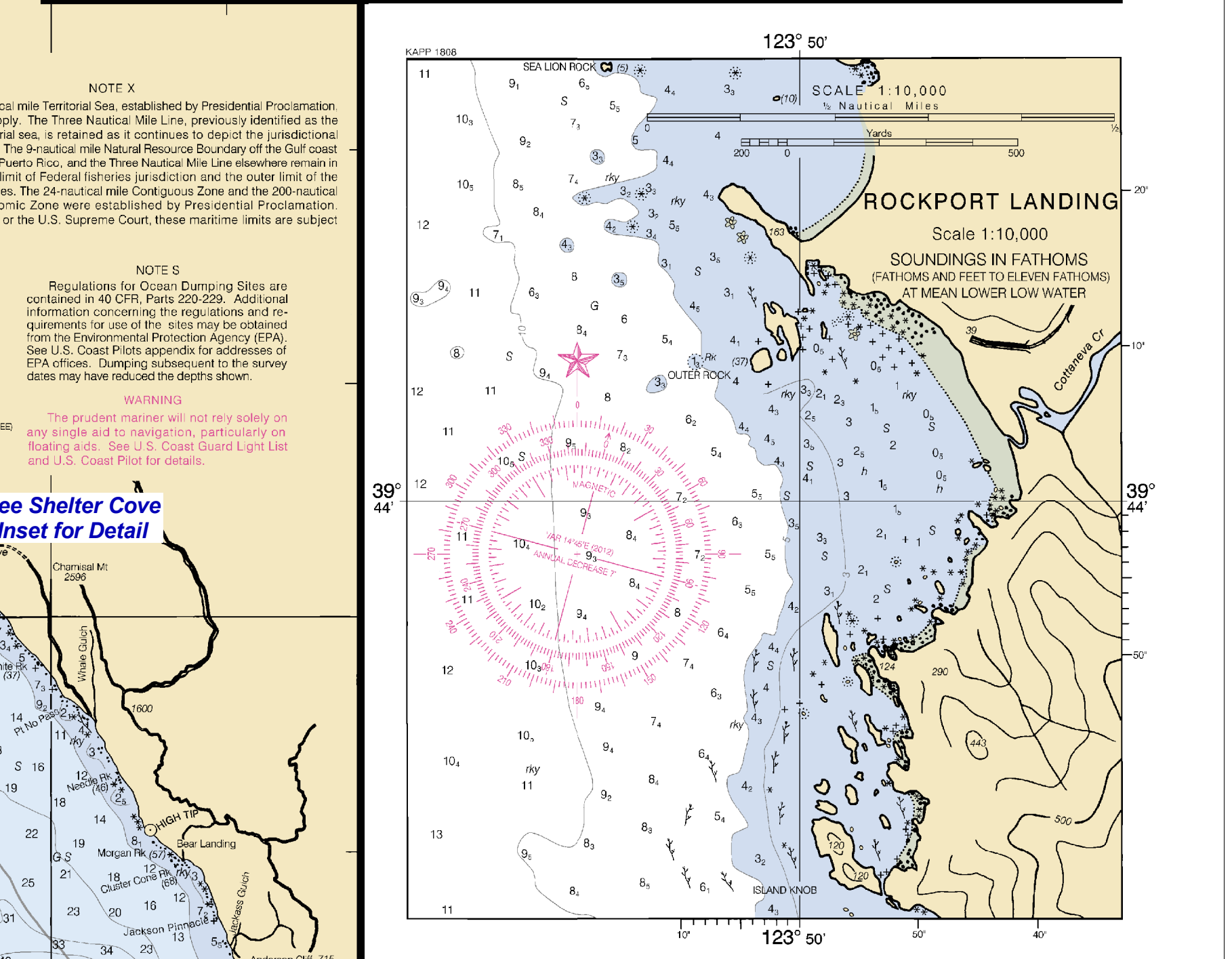
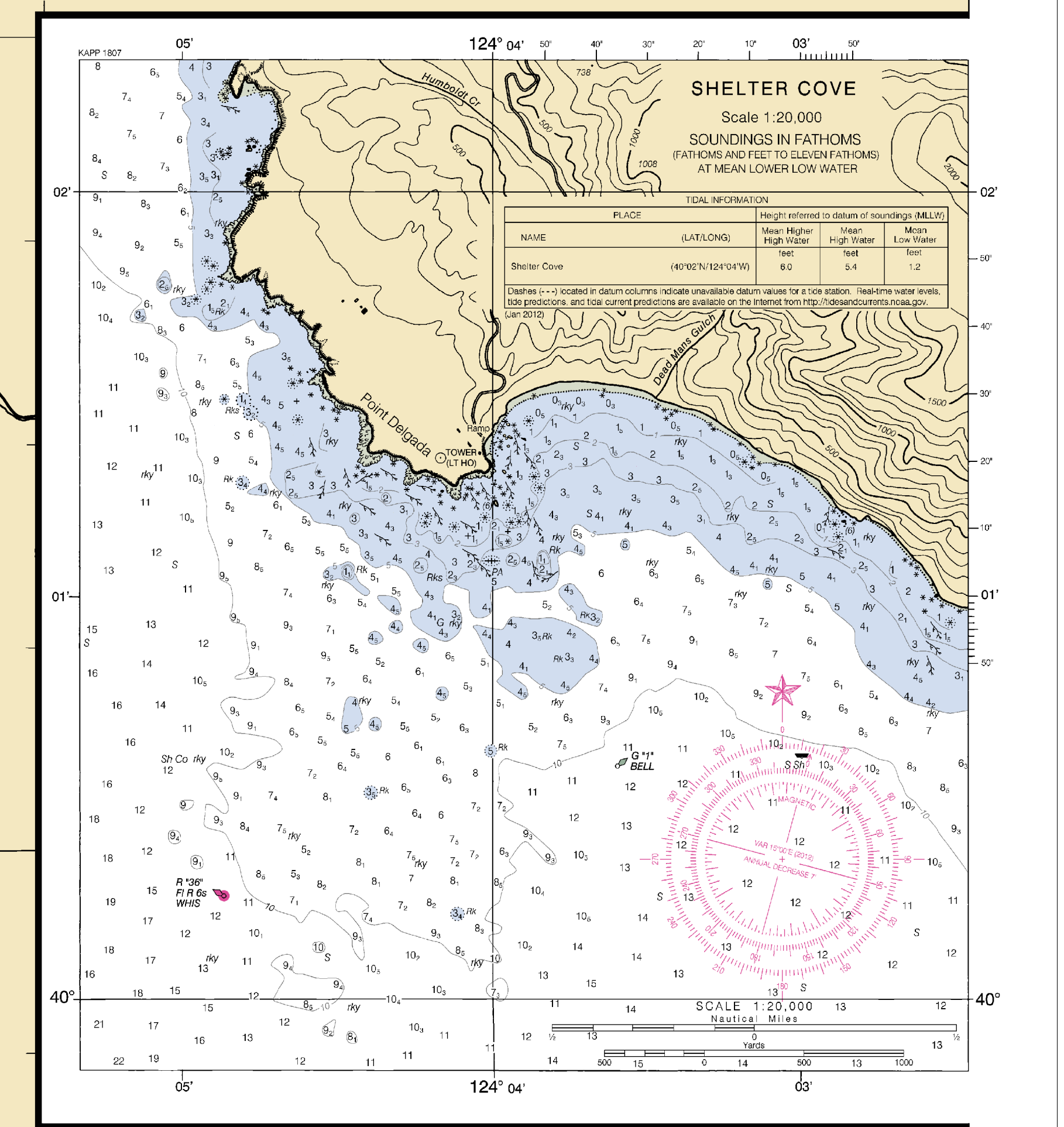
Mercaator Projection  
 Scale 1:200,000 at Lat 41° 00'  
 North American Datum of 1983  
 SOUNDINGS IN FATHOMS  
 (SOUNDINGS REFER TO MEAN LOWER LOW WATER)

NOAA WEATHER BROADCASTS  
 The NOAA Weather Radio stations listed below provide continuous weather broadcasts. The receiver must be capable of receiving 20 to 40 MHz and must be set to the appropriate channel. For more information, see the NOAA website at [www.noaa.gov](http://www.noaa.gov).

NOAA Chart 18620, 24th Edition, February 2012

CAUTION  
 Temporary changes or defects in aids to navigation are indicated on this chart. See Local Notice to Mariners.

SUPPLEMENTARY INFORMATION  
 Consult U.S. Coast Pilot 7 for important information concerning aids to navigation.



**LEGEND**

- NASCA Member Cables In Service
- NASCA Member Cables Out of Service
- Maritime Boundaries

**General Note**  
 These cables are plotted based on the best available data from cable owners and members of the North American Submarine Cable Association (NASCA) at the time of production.  
 Please be aware that there may be other cables in the area that are not depicted on this chart.

**CABLE & CONTACT INFORMATION**

Cable System	Status	Owner	Emergency Contact No.
HAW 1 E-W	OOS	AT&T	1-866-466-2288, Prompt 5
HAW 1 W-E	OOS	AT&T	1-866-466-2288, Prompt 5
HAW 4	OOS	AT&T	1-866-466-2288, Prompt 5
Japan - US Segment 8	In Service	AT&T	1-866-466-2288, Prompt 5
Japan - US Segment 9	In Service	AT&T	1-866-466-2288, Prompt 5
TGN Pacific Segment G5	In Service	Tata	1-732-282-4001
TPC 4 Segment B1	OOS	AT&T	1-866-466-2288, Prompt 5

**Emergency Contact Information**  
 In the event you become entangled in one of the submarine cables shown on this chart please contact the relevant owner listed on this chart 24 hours a day, seven days a week.

**For General Information**  
 For non-emergency information regarding any of the cable systems shown on this chart, or for marine planning purposes, please contact: [cableinfo@N-A-S-C-A.org](mailto:cableinfo@N-A-S-C-A.org)

**NATURAL SCALE** 1 : 200,000 at 41°00' N

0 5 10 15 Miles  
 0 5 10 15 Nautical Miles

**SPHEROID & DATUM :** WGS84  
**PROJECTION :** MERCATOR

**Notes:**  
 This chart is intended for general reference only and **NOT FOR NAVIGATION PURPOSES.**  
 Please be aware that other cables may exist in addition to those shown on this chart.

SOUNDINGS IN FATHOMS  
 AT MEAN LOWER WATER

**CHART HISTORY**

Produced by Charting Services  
 Global Marine Systems Limited, Chelmsford, United Kingdom  
 Copyright © 2021 Global Marine Systems Limited

**EDITION No. 4 September 2021**

**CHART BACKGROUND:**  
 NOAA Chart 18620, 24th Edition, February 2012

For more information see:  
[www.nauticalcharts.noaa.gov](http://www.nauticalcharts.noaa.gov)

**Global Marine**

**NASCA Cable Awareness Chart**

**California Region**

**Chart no. 18620**

**POINT ARENA TO TRINIDAD HEAD**

Global Marine Group  
 Ocean House  
 Chelmsford  
 Essex  
 UK  
 Tel: +44 (0) 1245 733000  
[www.globalmarine.group](http://www.globalmarine.group)