

THE NATIONAL CHARTING SERVICE 1807
UNITED STATES - WEST COAST
CALIFORNIA
SANTA MONICA BAY


Metric Projection
 Scale 1:40,000 at Lat. 33°55'
 North American Datum of 1983
 World Geodetic System 1984
SOUNDINGS IN FATHOMS
 (1 FATHOM = 6 FEET) (EXCEPT WHERE NOTED)
 AT MEAN LOWER LOW WATER

TECHNICAL DATA

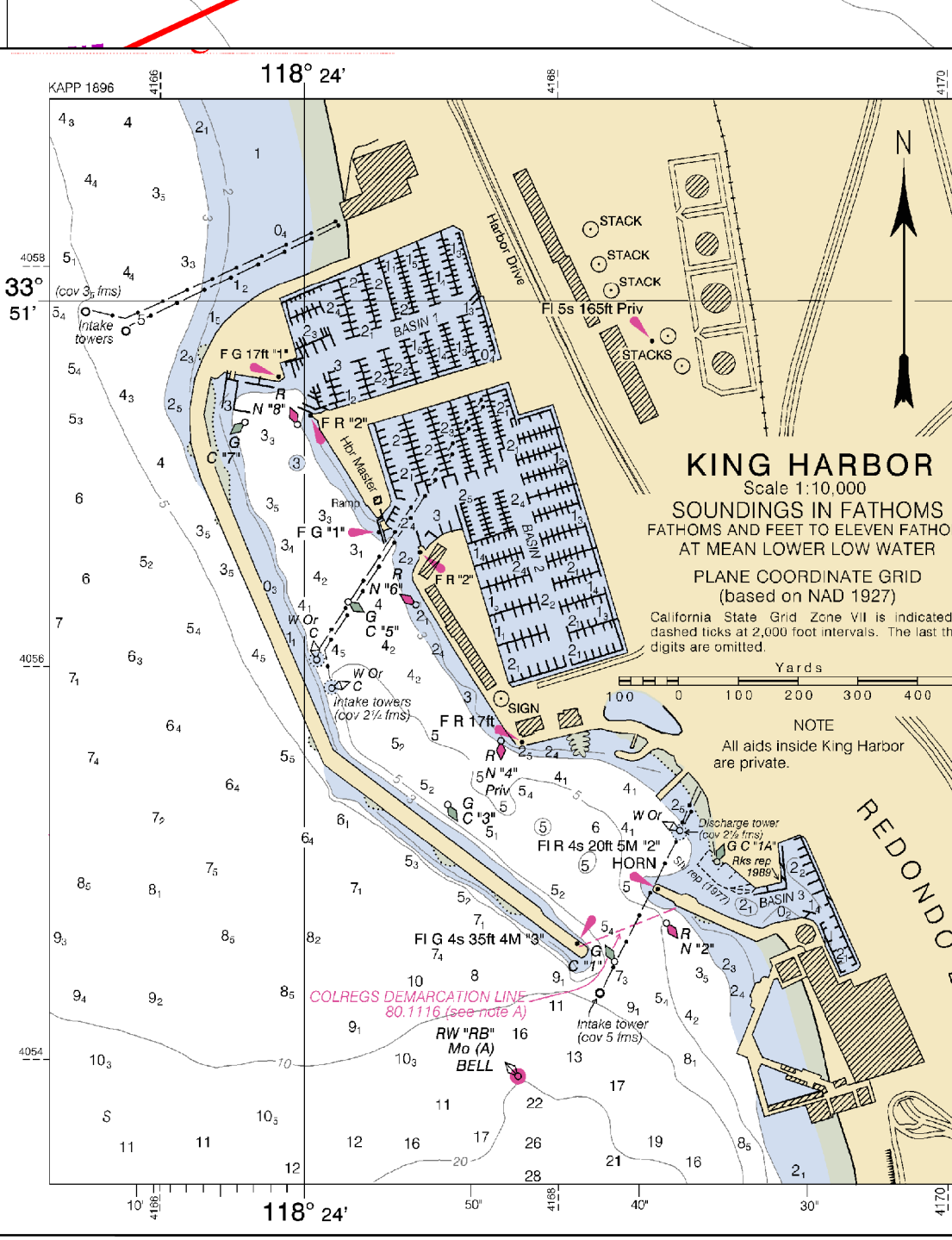
NAME	DATE	SCALE	PROJECTION	UNIT	REMARKS
Santa Monica Bay	1978	1:40,000	North American Datum of 1983	World Geodetic System 1984	

SOURCE
 The chart data is derived from the most recent hydrographic survey information that has been available for charting. Surveys have been conducted by the U.S. Army Corps of Engineers and the U.S. Navy. The U.S. Army Corps of Engineers is primarily responsible for the hydrographic data shown on this chart. The U.S. Navy is primarily responsible for the hydrographic data shown on this chart.

RESTRICTIONS
 This chart is intended for general reference only and is NOT FOR NAVIGATION PURPOSES. Please be aware that other cables may exist in addition to those shown on this chart.



North American Submarine Cable Association
www.n-a-s-c-a.org



LEGEND

- NASCA Member Cables In Service
- - - NASCA Member Cables Out of Service
- Maritime Boundaries

General Note

These cables are plotted based on the best available data from cable owners and members of the North American Submarine Cable Association (NASCA) at the time of production.

Please be aware that there may be other cables in the area that are not depicted on this chart.

CABLE & CONTACT INFORMATION

Cable System	Status	Owner	Emergency Contact No.
Curie Segment 1.1	In Service	Google	+1 732-578-7474
Global West Segment F	In Service	Zayo Networks	866-236-2824
Global West Segment G	In Service	Zayo Networks	866-236-2824
Jupiter Segment 1.5	In Service	META	+81-3-3270-6594
PLCN Segment S1.1.1	In Service	PLCN Consortium	+1 732-578-7474
SX NEXT Segment 7	In Service	SCCN	+1 877-572-8989
TGN Pacific Segment G5	In Service	TATA	1-732-282-4001
UNITY Segment S1	In Service	Unity Consortium	+1 732-578-7474

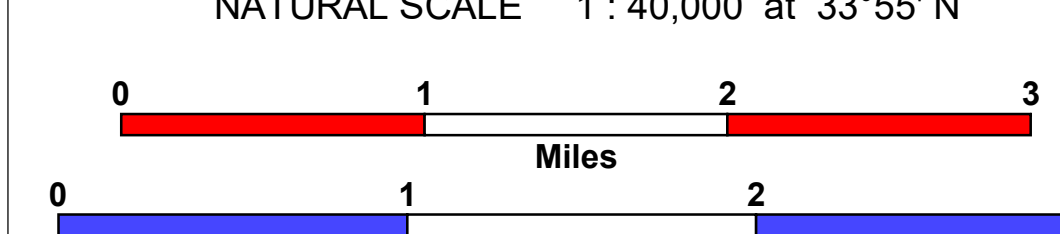
Emergency Contact Information

In the event you become entangled in one of the submarine cables shown on this chart please contact the relevant owner listed on this chart 24 hours a day, seven days a week.

For General Information

For non-emergency information regarding any of the cable systems shown on this chart, or for marine planning purposes, please contact: cableinfo@N-A-S-C-A.org

NATURAL SCALE 1:40,000 at 33°55'N



SPHEROID & DATUM: WGS84
PROJECTION: MERCATOR

Notes:

This chart is intended for general reference only and **NOT FOR NAVIGATION PURPOSES.**

Please be aware that other cables may exist in addition to those shown on this chart.

SOUNDINGS IN FATHOMS
 AT MEAN LOWER LOW WATER

CHART HISTORY


Produced by Charting Services
 Global Marine Systems Limited, Chelmsford, United Kingdom
 Copyright © 2023 Global Marine Systems Limited

EDITION No. 7 July 2023

CHART BACKGROUND:

NOAA Chart 18744. 33rd Edition, August 2010

For more information see: www.nauticalcharts.noaa.gov



NASCA Cable Awareness Chart

California Region

Chart no. 18744

SANTA MONICA BAY

Global Marine Group
 Ocean Survey
 Chelmsford
 Essex
 CM2 3PD
 Tel: +44 (0) 2047 10000
www.globalmarine.group